

PASPORT HIGH CURRENT SENSOR

This guide covers the major features of this product - it does not cover all of the available functions. This guide is not intended to replace the original equipment manual. Please refer to the manual for more detailed operating instructions and safety information.

SAFETY NOTES

1. Do not touch exposed energized wires directly with your hands.
2. Do not exceed the maximum allowable input range of any function.

EQUIPMENT DESCRIPTION

The PASPort High Current Sensor [1] measures current levels between -10 Amps and +10 Amp and works in conjunction with the Xplorer GLX.

This manual covers the functions and range of the sensor. For use of the Xplorer GLX, please view the associated manual.



Figure 1: PASPort High Current Sensor

EQUIPMENT OPERATION

1. Connect the sensor to one of the four available ports on top of the Xplorer GLX [2], or use the available extension cord between the GLX and the sensor [3].
2. An optional handle can be screwed into the side of the sensor [4]



Figure 2: Ports on Top of GLX



Figure 3: Sensor Extension Cable



Figure 4: Handle Attachment

3. Insert test leads with 4mm banana plugs into the positive and negative terminals [5] on the sensor



Figure 5: Test Leads

4. The voltage anywhere within the connected circuit should not exceed 10 Volts above or below earth ground.
5. Open the circuit at the point where current is to be measured and touch the black test probe tip to the negative wire of the circuit. Touch the red test probe tip to the positive wire of the circuit [6]. **Do not**

touch exposed energized wires directly with your hands. If the probes must be physically attached to the wires, turn off the power to the circuit before doing so.

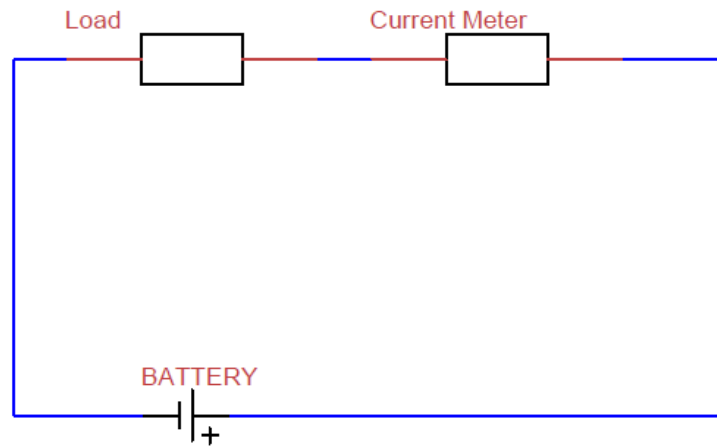


Figure 6: Measuring Current

6. If the current through the sensor exceeds +/- 10 Amps, the Over Current Indicator [7] will light up. Reduce the current, or disconnect the sensor to prevent damage.



Figure 7: Over Current Indicator